



Windows Home Server
2011
Setup guide

Welcome

We would first like to thank you for purchasing a Tranquil PC Home Server.

If you have not owned a Home Server before we hope you enjoy your Windows® Home Server 2011 (WHS2011) experience and it benefits you as it has done 10,000's of others.

For those of you experienced in Home Server we are confident the Tranquil Home Server will meet your needs and exceed your expectations.

Over the next few pages we will go through some simple steps to support you in setting up your Home Server.

As we have opted for a paperless manual it gives us the unique opportunity of updating and adding more information to this guide and also reducing environmental costs. If you have any feedback or suggestions please email us at eshop@tranquilpc.co.uk

Thank you for taking the time to read this introduction.

Stage one

Plugging it in

Tranquil PC has a range of Home Servers but each have the same simple requirements as far as mandatory connections go.

Network

Home Servers require a reliable network connection so it's required you connect to a wired network. Using the supplied CAT6e cable connect to your local network hub, or router.

Power

Using the supplied 12v power supply, connect the 2.5mm power connector. Some of our servers may have 2 power sockets, these run in parallel so you can use either port (just not both ports at the same time).

The server should now power on but if not press the power button and wait whilst the unit powers up.

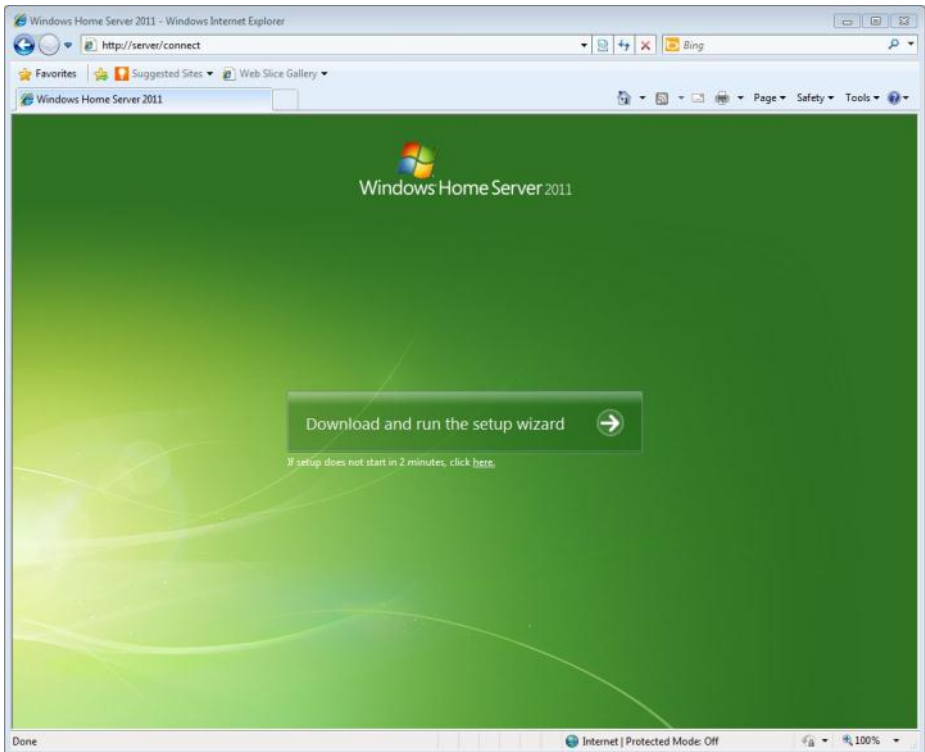
Stage two

Connecting

Setup has been made simple with WHS2011 and here are a few steps to guide you through the setup.

First open a browser and visit this link or simply click on the link below if the PC you are currently on is the PC you wish to run the setup on: <http://server/connect>

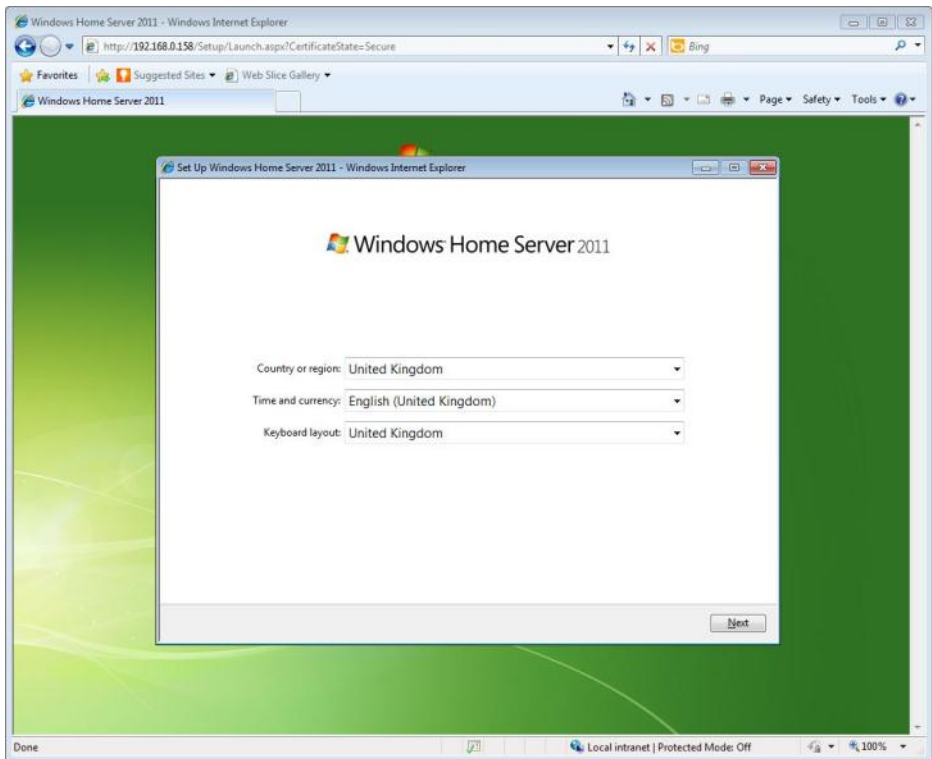
You will then be taken to this page, click download.



Stage two

What's your language?

You may be presented with a couple security warnings, click run whenever shown and the application will launch as shown below.

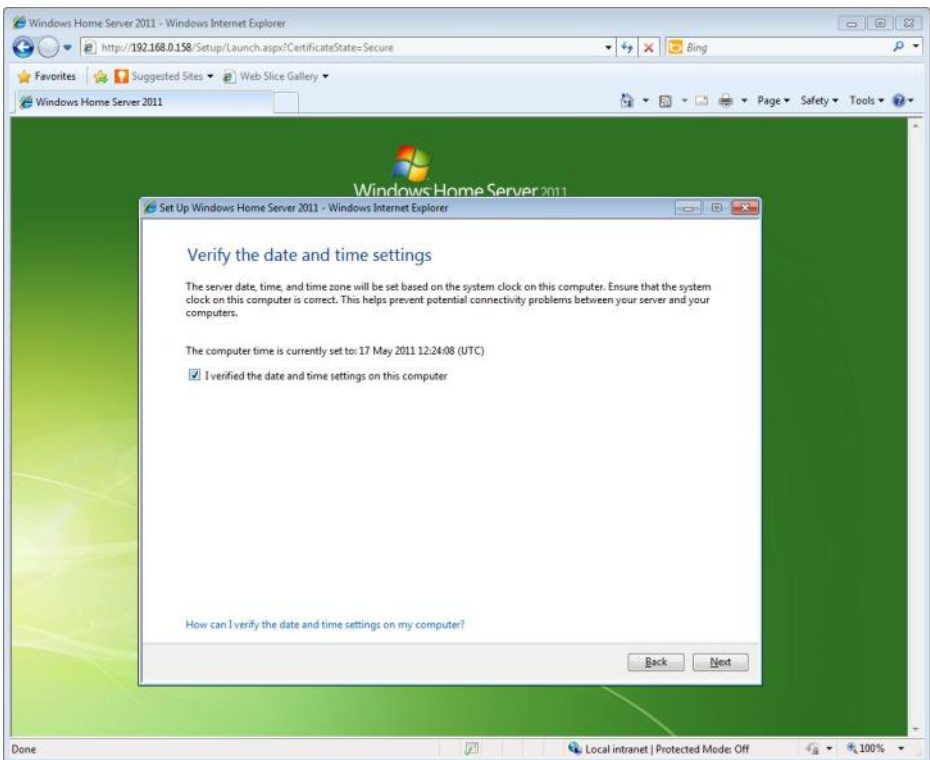


Then select the language options to best suit you and then click next.

Stage two

What time is it?

You will then be presented with a screen to verify your time and date, ensure the PC you are running has the correct time as this determines the time and date on your server, this is very important to ensure your PC's back up at the right time.

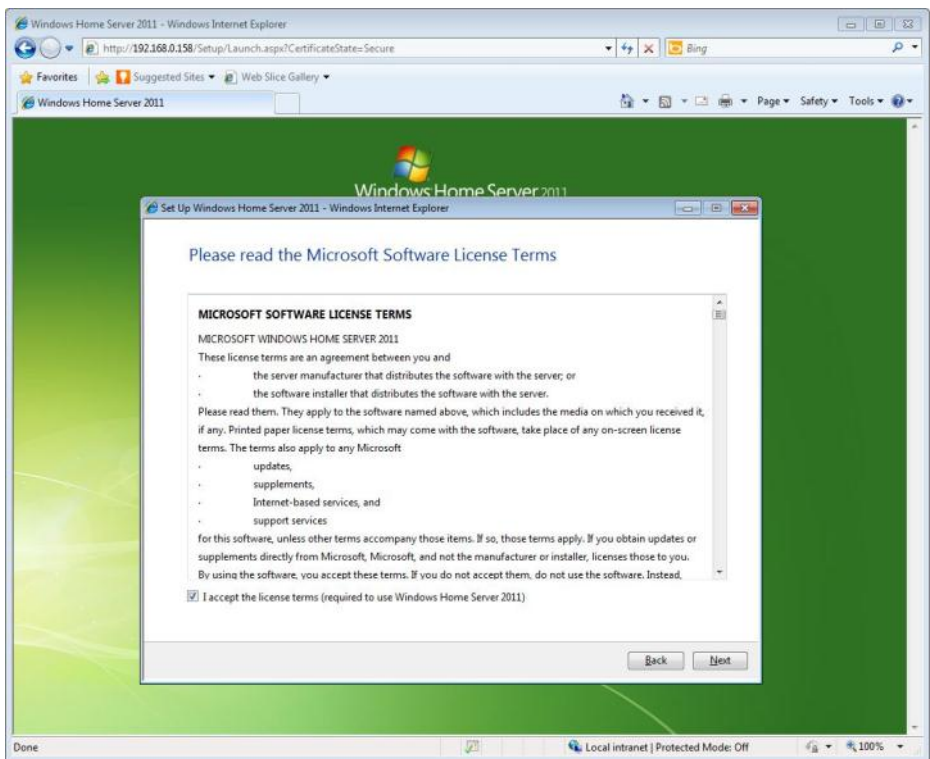


If it is correct tick “I verified” and then click next.

Stage two

Terms and Conditions

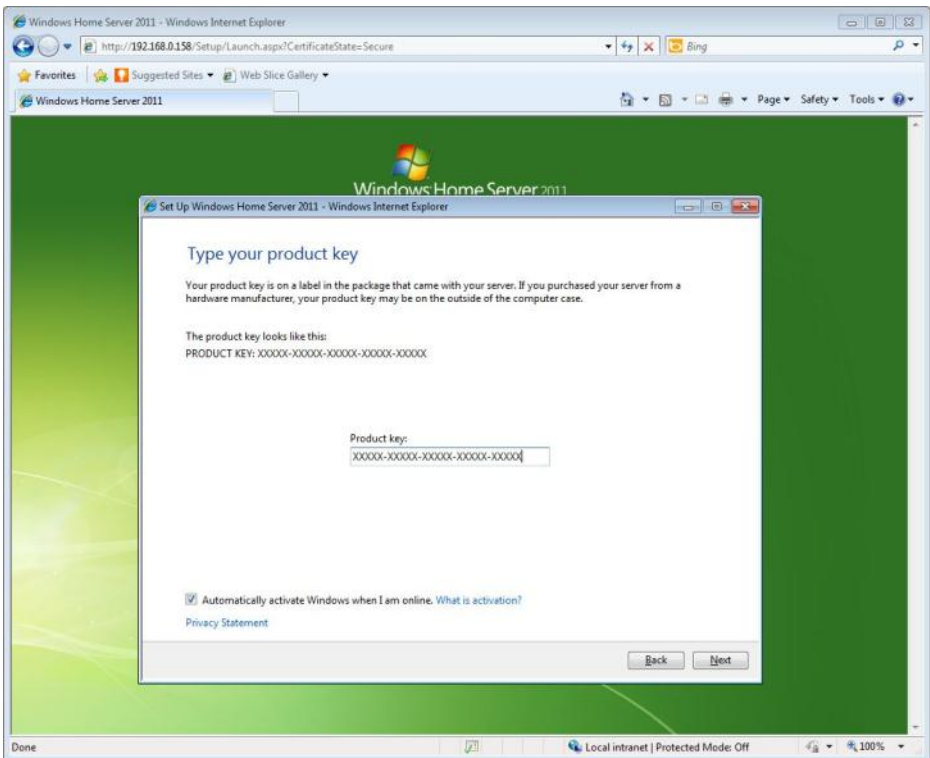
Next you will be presented with Microsoft T&Cs, once you have read and are within agreement tick “I Accept...” and then click next



Stage two

Getting legal

On the next screen you need to enter your product key, this can be found on the Home Server unit. The label position varies on each model of our Home Servers but are generally it is on the side or underneath.



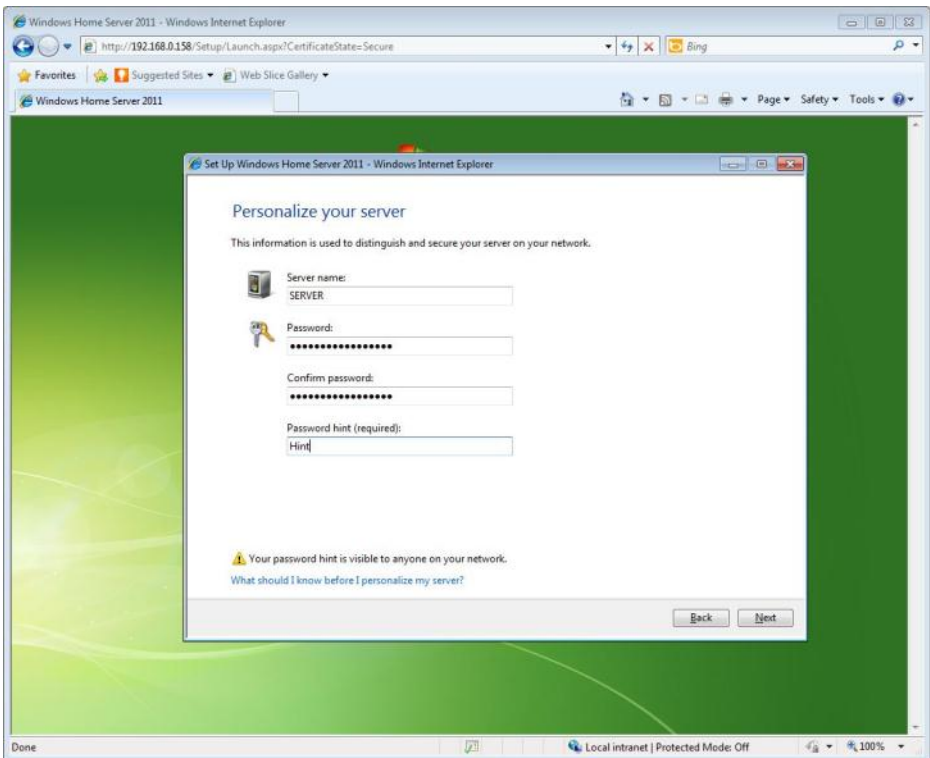
It is recommended you have “Automatically activate...” ticked before you click next as your Home Server key will be automatically verified online.

Stage two

Getting Personal

On this screen you need to give your server a name and administrator password.

Be sure it is a strong password and is memorable as this will be required for Administration of the Home Server.



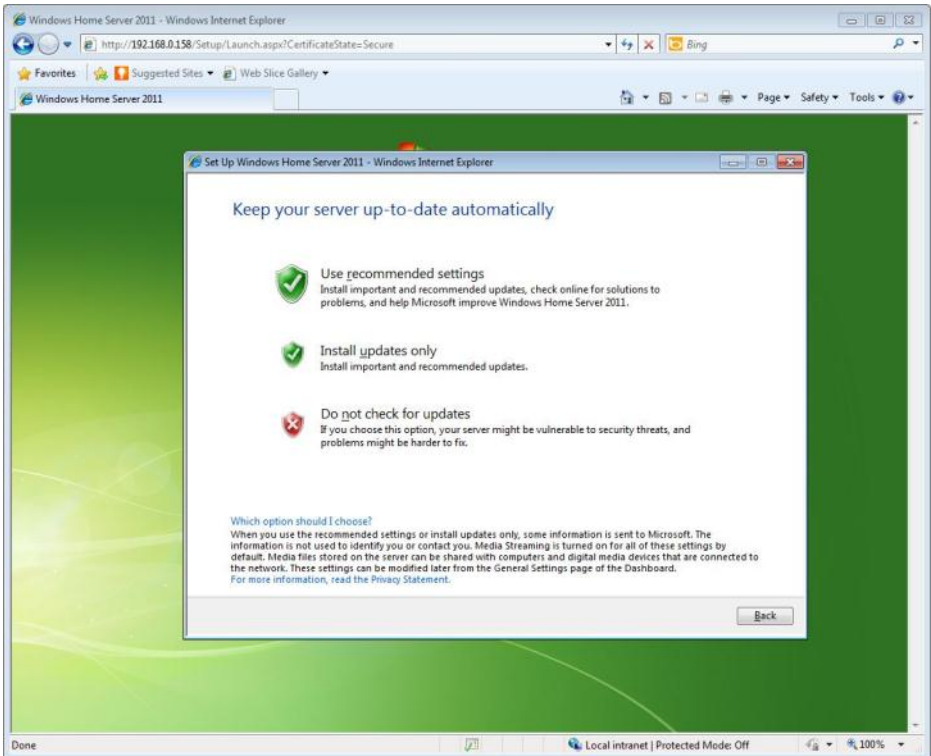
Forgetting the password is critical, be sure to use a HINT that is meaningful.

Once you are happy with your choice click next.

Stage two

Nearly done

You are nearly done with the first time setup now, select one of the upgrade options and click next.

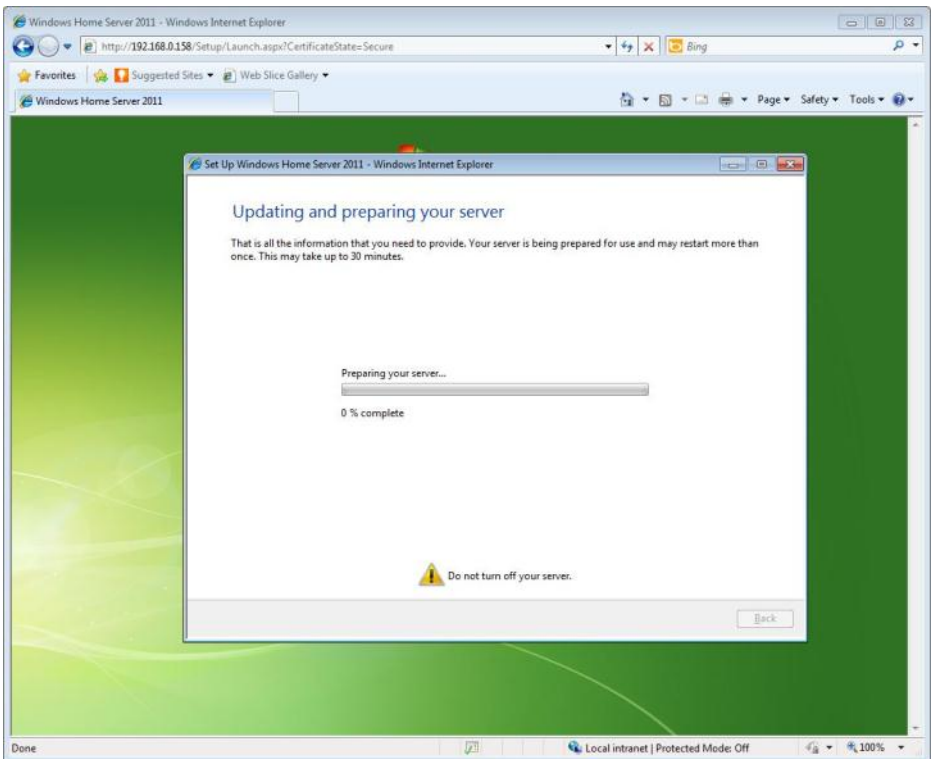


Stage two

The Home Server is almost ready

The server will now run a series of steps automatically to configure your Home Server using the information you supplied.

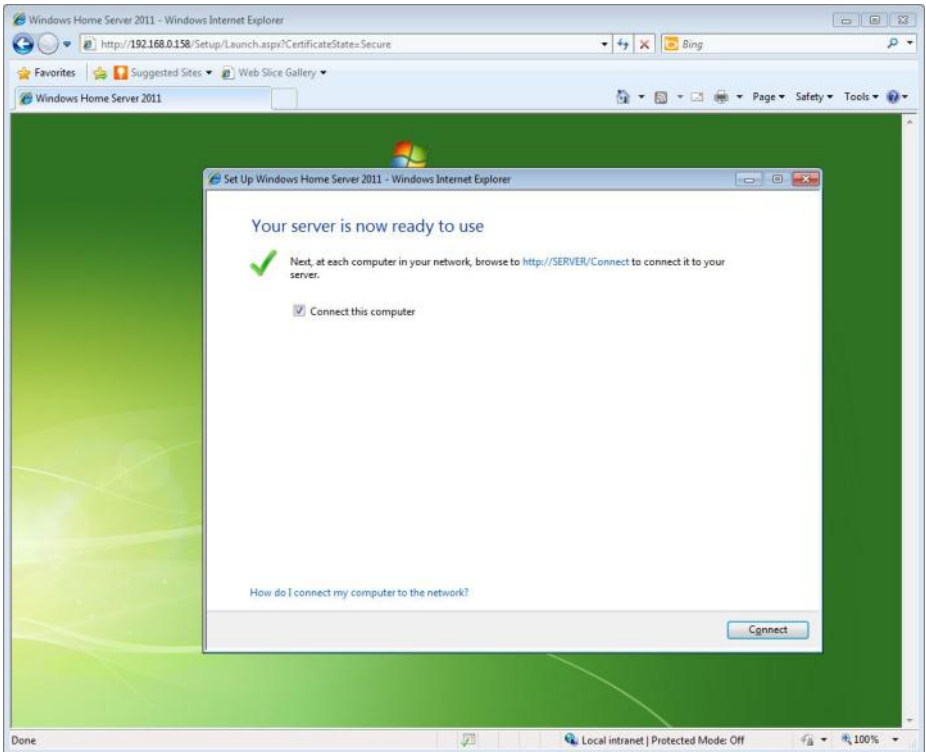
The server may restart so do not worry if this happens.



Stage two

You're done

Your Home Server is now initialised and is ready to be used. But first you will need to install the Home Server Launch Pad in order to administer the settings of your server.



If you wish to install the Home Server Launch Pad on the PC you have just run the initialisation on then ensure the “connect this computer” option is ticked then click connect.